

# Xlpd 3

## Powerful LPD Printer Server

Xlpd is an industry proven LPD printer server developed by NetSarang. It allows users to share local printers with other remote PCs and manage/centralize all print requests that occur within a company. Proven reliability and powerful features such as multi-queue support, print job control and detailed logging makes Xlpd the best choice for facilities such as libraries and PC labs that handle large amount of printing requests.



**Multi Queue Support**  
Apply unique print settings for each print queue

**Notice Panel**  
Current notice and logs of Xlpd processing

**Print Job list**  
Intuitive print job management (Print/Selective Reprinting/Cancel)

## Key Benefits

### Print remote documents from a local printer

Xlpd helps you print remote files locally without manually downloading them into your local computer. When you are connected to a remote UNIX/Linux system with Xmanager or Xshell, you can print remote documents easily by clicking the print button on the application or simply by entering the print command.

### Print local documents from a remote printer

With Xlpd installed on the remote PC, you can send local documents directly to the remote machine for printing. There is no need to install an application on the remote machine to open the file for print. By eliminating the need to transfer an actual file, it can greatly lower the risk of losing important data.

### Manage multiple print queues / Detailed print history logging

Xlpd saves requested print jobs under corresponding print queues. With multiple print queue support, users can now have different settings on each print queue. Once Xlpd receives a print job, it can be sent directly to printers or left in queue for manual printing. Since Xlpd saves detail history and log of all print jobs and errors, the administrator can have more control over the printing process.

## Specification

### Installation and deployment

- Windows 98/ME/NT/2000/XP/2003/Vista
- Windows Terminal server
- Citrix MetaFrame Presentation server
- InstallShield install package
- Silent installation support

### General

- LPD support
- UNIX/Linux, Windows LPD printer support
- Local/Remote print support
- Server name view support
- Error message upon any error

### Supported Host

- Solaris, HP-UX, AIX, IRIX/SCO, Most Linux
- Windows 98/ME/NT/2000/XP/2003/Vista

### Queue Management

- Add/modify/remove print queue
- Convenient print tab access

### Print

- Custom margin support
- Custom line spacing
- Manual FF (From Feed) insertion
- Automatic UNIX > DOS format conversion
- Custom font type and size support
- Direct print / line printing

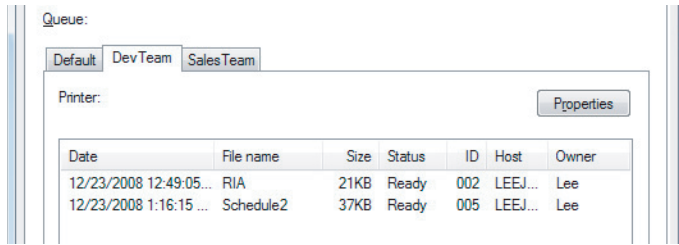
### Log

- View detailed print log
- View recent users
- View print job status

## Key Features

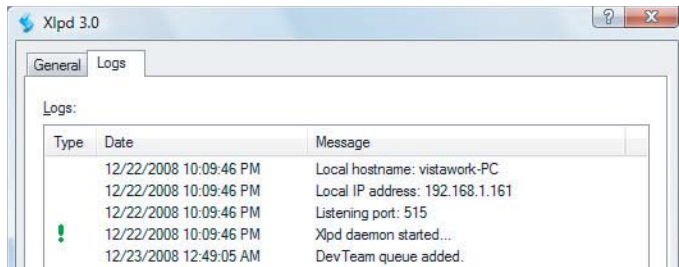
### Multi-Queue | Have different settings for each queue

This allows users to create multiple queues on Xlpd and have different settings on each queue such as a different printer, formatting option, and printing action providing a flexible printing environment.



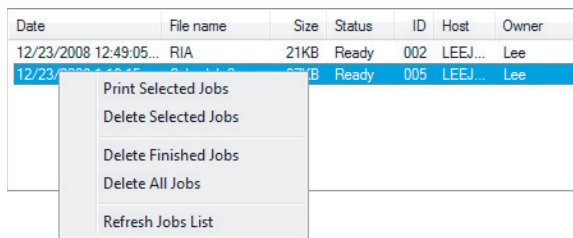
### Log | Comprehensive print history

Xlpd provides a comprehensive log view for all print history. Every print job and error are altered to user and stored in a separate log for secure and easy access.



### Controlled Work Environment | Intuitive print job management

Managing print jobs are easy even for first time users with intuitive print management menu. All print jobs that enter Xlpd are either sent to a printer directly or saved in a queue for manual print. From the print queue, users can now manage the saved print jobs by allowing it to print or cancel.



## Features

- LPD protocol support**  
 Fully supports LPD protocol(TCP 515) in RFC 1179
- Printer Setup**  
 Set a different printer for each print queue
- Direct Print and Custom text formatting**  
 Set font type, size and margin for printing text files or use direct printing feature to send PS (Post Script) files
- Automatic CRLF Conversion**  
 Xlpd automatically changes CR(Carriage Return) to CRLF(Carriage Return & Line Feed) to allow printing UNIX files directly on Windows
- Intuitive print Job listing**  
 All print jobs are shown on the Print Job panel and users can view the detailed information on each print job
- Convenient print job processing**  
 Print/reprint/cancel/remove print jobs through the intuitive print job list
- LPQ/LPSTAT commands support**  
 UNIX LPQ and LPSTAT commands are supported by Xlpd
- Alternative LPD port support**  
 Depending on the network environment, you may need to use different ports for receiving print jobs. Xlpd allows users to use an alternative LPD port to accommodate this need
- Friendly Error Message dialog box**  
 Any error messages that occur during the use of Xlpd are reported to users in the friendly Error Message dialog box

## Get Xlpd Now

### Try Xlpd for Free for 30 Days

You can evaluate Xlpd for free for 30 days. Evaluation copy is fully functional and there is no feature limitation.

- Download Link**

<http://www.netsarang.com/download/main.html>

### When You Are Ready to Buy

You can buy Xlpd through our online store or by contacting one of our world wide resellers in the following reseller list. Also, you can send us your purchase order at [sales@netsarang.com](mailto:sales@netsarang.com).

- Reseller List**

<http://www.netsarang.com/reseller/main.html>

- Online Store**

[http://sales.netsarang.com/e\\_sales/online\\_store.html](http://sales.netsarang.com/e_sales/online_store.html)

### Find out more about Xlpd

For more detail on Xlpd and other applications, please visit our website at <http://www.netsarang.com/>



### NetSarang, Inc.

3003 North First Street  
 San Jose, CA 95134, U.S.A.  
**Tel:** (408) 432-5087 | **Fax:** (408) 432-5086  
**Email:** [sales@netsarang.com](mailto:sales@netsarang.com)  
**Website:** <http://www.netsarang.com>

### About NetSarang Computer, Inc.

NetSarang Computer, Inc. develops, markets and supports secure connectivity solution in the global market. The company develops a family of PC X server and SSH client software for PC-to-Unix and PC-to-Linux, and is expanding its TCP/IP network technologies to other Internet businesses. The company offers its products and services to more than 90 countries around the world.